

# Southern Accents

The magazine of fine Southern interiors and gardens

January-February 2002

*all about*  
**COMFORT**

*fresh  
twist on*  
**Pink and  
Green**

winning rooms  
from our  
**Annual Design  
Contest**

  
**WINHALL**  


FABRICS

WALLCOVERINGS



**SPORT OF KINGS**

- Ainsworth Noab – Atlanta*
- The Martin Group – Boston*
- Summer Hill Ltd. – Chicago*
- The Hargett Showroom – Dallas*
- Christopher Norman – Los Angeles*
- Christopher Norman – New York*
- McRae Hinckley – San Francisco*
- J. Lambeth & Co – Washington*

*To The Trade*

61 Industrial Road  
 Berkeley Heights, NJ 07922  
 Phone: 212-477-9821/ Fax: 212-477-9812

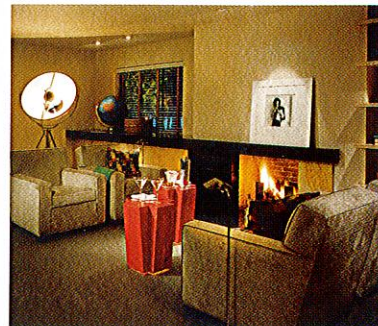
*e-mail: sales@winhallcollection.com*

southern accents & ASID  
 national residential interior design contest winners

# first runners-up

**JOHN J. SCHNEIDER / LIVING ROOM**

For his own Seattle home built in 1941, designer John J. Schneider and his associate Sheron Bailey Curutchet combined contemporary elements with period accessories referencing the time of the house's construction. Above the fireplace of black granite and golden-fern marble, Schneider placed a signed Robert Mapplethorpe print of vocalist Patti Smith. A pair of striking Marc D'Estout "Rescue" tables are lit from below. Schneider dispensed with traditional living room sofas and opted for faced-off pairs of club chairs. Near the corner window, a Fortuny lamp and antique globe give off the aura of a movie set.



**LAURA C. SINGLETON / DINING ROOM**

A magnificent set of 19th-century French bird prints sets the tone of youthful elegance in a dining room designed for a young family with four boys. Designer Laura C. Singleton says of her Houston clients, James and Donna Donnell, "they have lots of extended family, and they love to have them over for meals." So she and Donna found the ideal way to accommodate a large group without overwhelming the room—a round table covered in a table skirt and linen cloth with antiqued reproduction chairs. The mossy green of the walls is the boldest color in the house. "Donna wanted a subdued palette, very calm and soothing," says Singleton. "Elsewhere the colors are a little paler, but in here we felt we could be more dramatic."

**BEATRICE PILA-GONZALEZ / KITCHEN**

The dynamic kitchen in Key Biscayne, Florida, was specifically designed to accommodate the owners' collection of art and unique teapots, as well as provide a comfortable space for entertaining. Miami interior designer Beatrice Pila-Gonzalez doubled the original kitchen area, opened the ceiling to expose loftlike ductwork and track lighting, and installed illuminated shelving that displays the owners' one-of-a-kind teapots. A feeling of comfortable urbanity asserts itself in the balance of light woods with metal fixtures and chairs. Red accents in the artwork and upholstery cheerfully complement this balance.

